

## Alarms on Race Studio 3

**Question:**

What kind of alarm can I set and display on my AiM device through Race Studio 3?

**Answer:**

Accessing on Race Studio 3 to the tab **Shift Lights and Alarm** – with the **Add New Alarm** you can configure one or more alarms according to your needs.



After having set the conditions to trigger an action, you can choose and configure the following alarm or warning types:

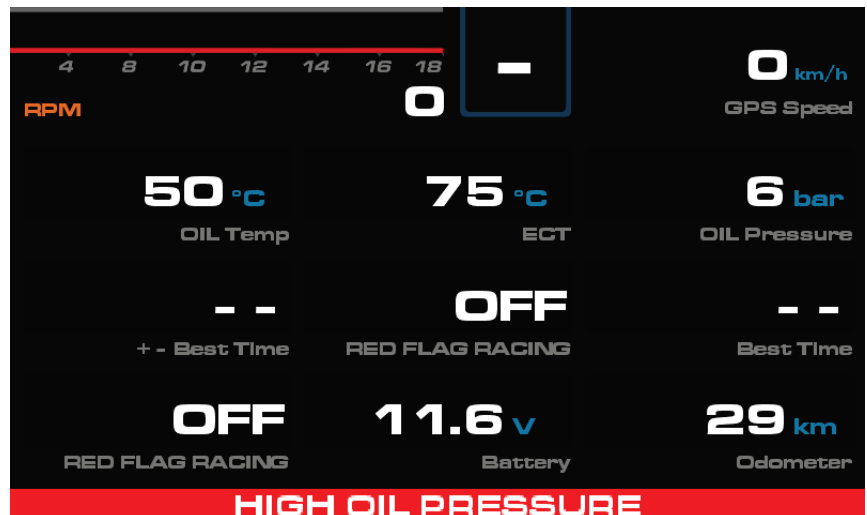
- **Message:** choosing the text of the message to be displayed on the bottom line
- **Display Measure:** choose the color to highlight an alarmed parameter
- **Popup Color msg timed:** choose the text and the background of a full screen warning
- **LED:** Choose one of the configurable LEDs for the most classical warning alert
- **Output Signal:** choose to activate or deactivate an external element with a low side output

**Message:**

writing the message in the box, this is displayed on the bottom line of the dash, eventually together with other warnings.

The bar at the bottom can show one message at time, this depends on the warning priority.

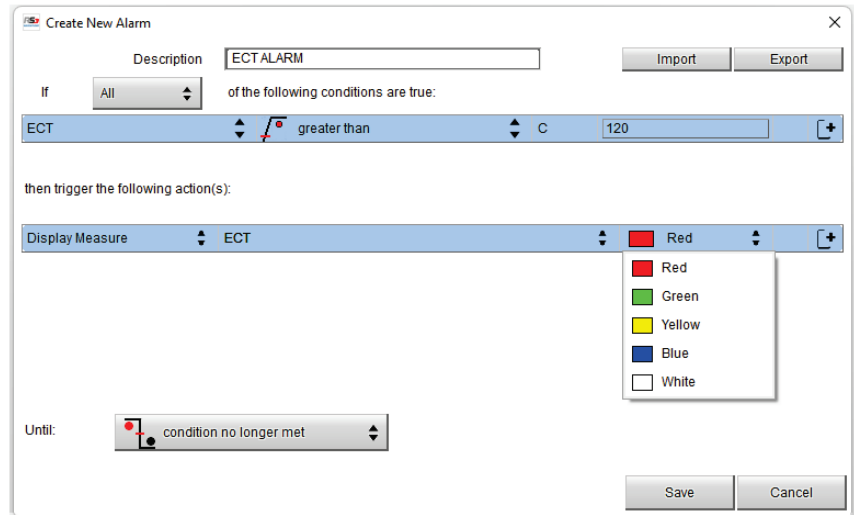
When the above condition occurs, the display will appear as shown in the picture.



**Display Measure:**

selecting the color of the configured channel value, this will be highlighted once conditions are met.

This warning is a true help when checking alarms at a glance.

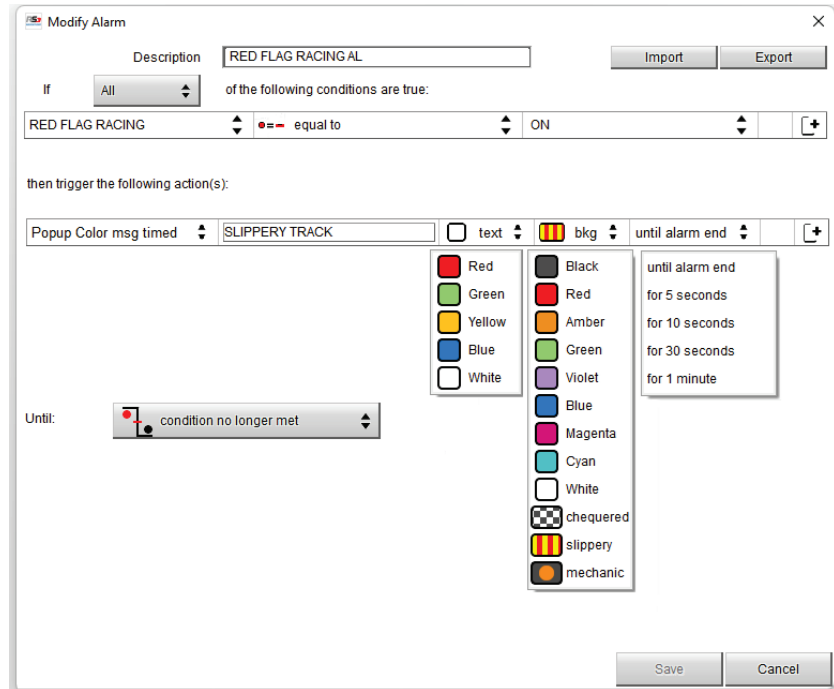


When the above condition occurs, the display will appear as shown in the picture.



**Popup Color msg timed:**

writing the text, choosing the text color, the background and the activation time, makes the dash display a full screen warning which can be related to high priority alarms, or also marshalling warnings like flags. The time out can be set, or the message can be cleared with the exit strategy (i.e. a button is pressed)

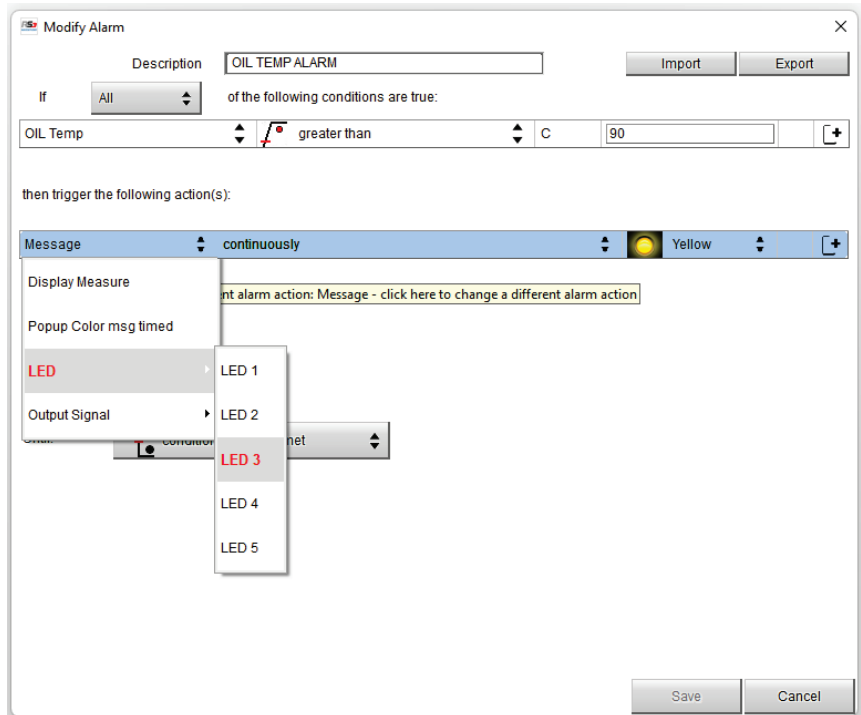


When the above condition occurs, the display will appear as shown in the picture.



**LEDs:**

choosing the LED, the operation and the color, the instrumentation can display the most classical warning. Also more actions, or more LEDs can be selected at the same time.

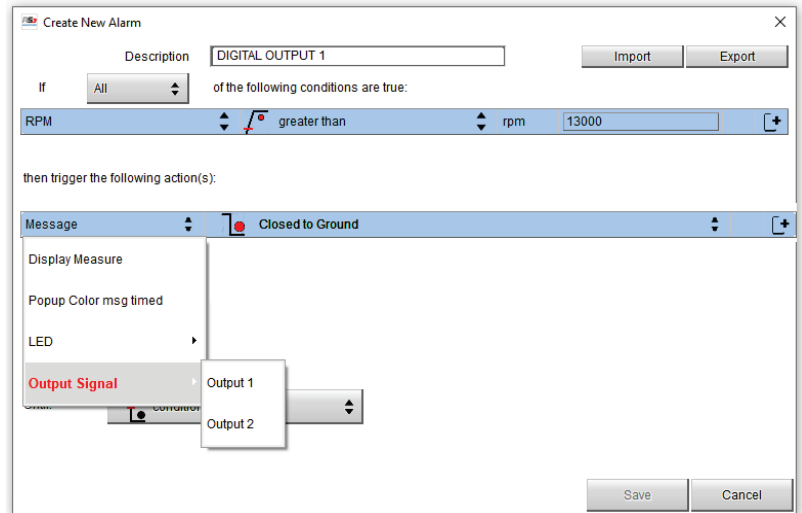


When the above condition occurs, the display will appear as shown in the picture.



**Output Signal:**

choosing when these digital outputs must be activated and deactivated, the device operates a switch to ground or releases the line.

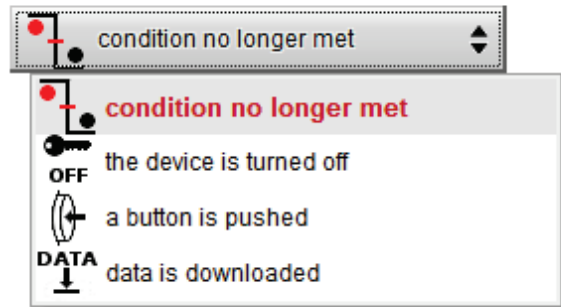


**Note please:** The power of digital Outputs, their number and their availability depends on the type of AiM device you are using, this information can be found on the user manuals of each device.

**Exit condition:**

every warning can be closed in a different way. The default setting is linked to the condition no longer met, which automatically disables the alarm. The other options are the device turn off, the push of a button or the data download.

Until:



**Priority:**

the channels at the top are the ones that have the highest priority, so if a resource is shared among different events, those on top will be served.

	Event	Alarm		
<input checked="" type="checkbox"/>	ALARM	LED: 1	Output:	
<input checked="" type="checkbox"/>	OUTPUT 1	LED:	Output: 1	
<input checked="" type="checkbox"/>	output	LED:	Output: 2	