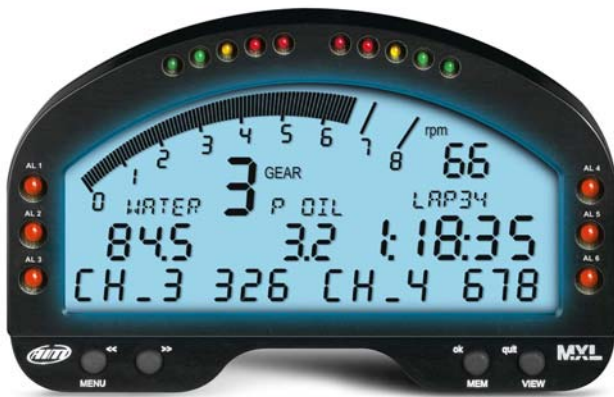
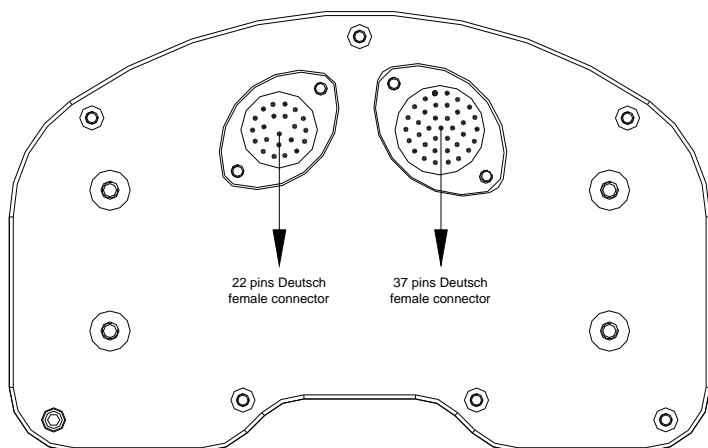


MXL Pro05 Pinout




N.rev. / Rev. N.	Descrizione / Description	Data / date	Firma / Sign	Contr. da / Ckd. by
------------------	---------------------------	-------------	--------------	---------------------

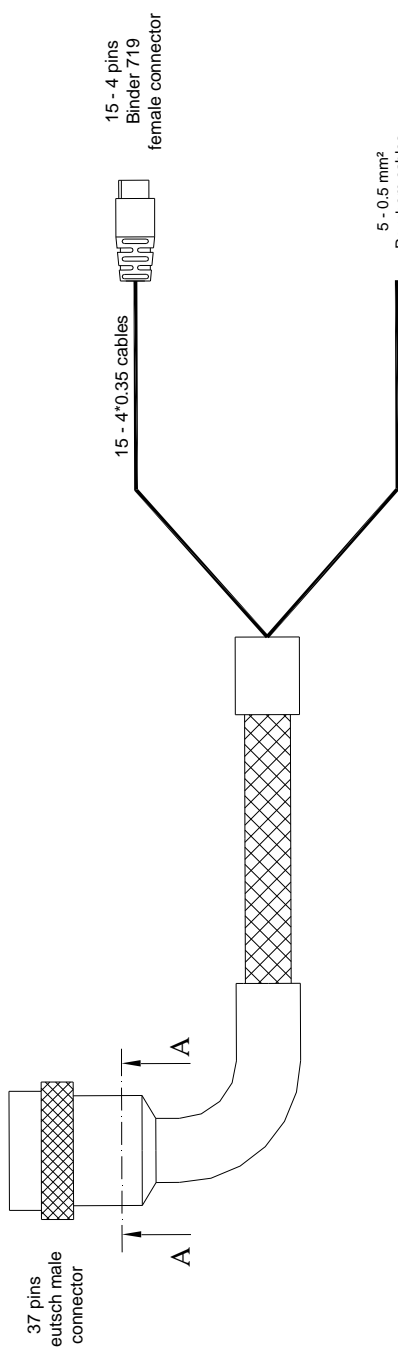
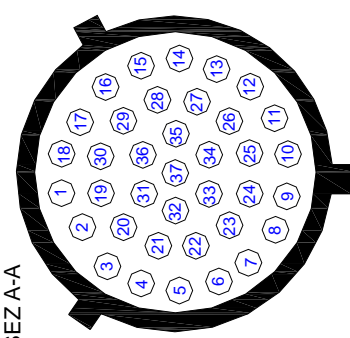
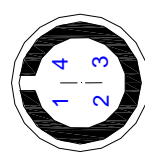
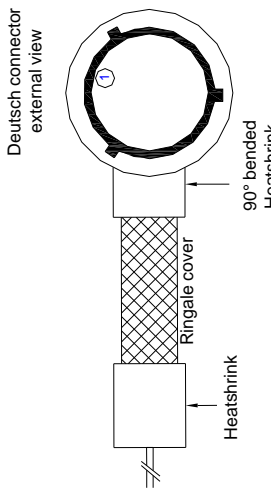

MXL Pro05 pinout



22 pins Deutsch female connector pinout	
Pin	Function
1	+VB
2	GND
3	CAN 0+ for expansion modules
4	CAN 0- for expansion modules
5	Speed 3
6	Speed 4
7	USB D+
8	USB D-
9	GND
10	+ VB
11	GND
12	GND
13	+ VB
14	MEM
15	VIEW
16	Gear Flash
17	RS232RX for ECU interface
18	RS232TX for ECU interface
19	GND
20	CAN 1+ for ECU interface
21	CAN1- for ECU interface
22	9-15 V external power

37 pins Deutsch female connector pinout	
Pin	Function
1	9-15 V external power
2	Analog input 1
3	Analog input 2
4	Analog GND
5	Analog GND
6	V Reference
7	V Reference
8	Analog input 3
9	Analog input 4
10	Analog input 6
11	Analog GND
12	RPM square wave (>5V)
13	RPM coil input
14	+VB
15	GND
16	+VB
17	+VB
18	GND
19	Analog input 11
20	Analog input 12
21	V Reference
22	V Reference
23	Analog input 10
24	V Reference
25	Analog input 9
26	Analog input 8
27	Analog GND
28	GND
29	+VB
30	Speed 2
31	Analog GND
32	Analog input 5
33	Analog input 7
34	V Reference
35	Analog GND
36	Speed 1
37	Optical lap


Rif. / Ref.	Q.tà / Q.ty	Materiale / Material	N. articolo / Item N.	
Progettato da / Designed by	Contr. da / Ckd. by	Approvato da / Approved by	Nome file / File name	Data / Date
L.I.				Scala / Scale
		Titolo / Title		
		Pinout MXL Pro05		
N. disegno / Drawing N.			Rev. / Rev.	Foglio / Sheet
				1 of 1

N.rev. / Rev. N.	Descrizione / Description	Data / date	Firma / Sign	Contr. da / Ckd. by
<h1>MXL Pro05 cable - 37 pins Deutsch connector</h1>				
 <p>37 pins Deutsch male connector</p> <p>15 - 4*0.35 cables</p> <p>5 - 0.5 mm² Raychem cables</p> <p>15 - 4 pins Binder 719 female connector</p>				
 <p>SEZ A-A</p> <p>37 pins Deutsch male connector pinout Contact insertion view</p>				
 <p>4 pins - Binder 719 female connector pinout Contact insertion view</p>				
 <p>Deutsch connector external view</p> <p>Ringale cover</p> <p>90° bended Heatshrink</p> <p>Heatshrink</p>				
Rif. / Ref.	Q.tà / Q.ty	Materiale / Material	N. articolo / Item N.	
Progettato da / Designed by L.I.	Contr. da / Ckd. by	Approvato da / Approved by	Nome file / File name	Data / Date Scala / Scale
 <p>Racing Data Power</p>		Titolo / Title Cavo MXL Pro05 - connettore Deutsch 37 pin		
		N. disegno / Drawing N. 04.554.20	Rev. / Rev.	Foglio / Sheet 1 of 3

N.rev. / Rev. N.	Descrizione / Description	Data / date	Firma / Sign	Contr. da / Ckd. by
------------------	---------------------------	-------------	--------------	---------------------

Table of channels cabled with Binder 719

Channel	Binder pin	Cable colour	Deutsch pin	Connection	Length
Ch. 1	1	White	2	+ Analog input 1 Analog GND	340 mm
	2	Black	4		
	3	Red		+ V reference	
	4	Blue	21		
Ch. 2	1	White	3	+ Analog input 2 Analog GND	340 mm
	2	Black	4		
	3	Red		+ V reference	
	4	Blue	21		
Ch. 3	1	White	8	+ Analog input 3 Analog GND	360 mm
	2	Black	5		
	3	Red		+ V reference	
	4	Blue	6		
Ch. 4	1	White	9	+ Analog input 4 Analog GND	360 mm
	2	Black	5		
	3	Red		+ V reference	
	4	Blue	6		
Ch. 5	1	White	32	+ Analog input 5 Analog GND	380 mm
	2	Black	31		
	3	Red		+ V reference	
	4	Blue	7		
Ch. 6	1	White	10	+ Analog input 6 Analog GND	380 mm
	2	Black	31		
	3	Red		+ V reference	
	4	Blue	7		
Ch. 7	1	White	33	+ Analog input 7 Analog GND	400 mm
	2	Black	35		
	3	Red		+ V reference	
	4	Blue	34		
Ch. 8	1	White	26	+ Analog input 8 Analog GND	400 mm
	2	Black	35		
	3	Red	16	+VB	
	4	Blue	34	+ V reference	
Ch. 9	1	White	25	+ Analog input 9 Analog GND	420 mm
	2	Black	11		
	3	Red	16	+VB	
	4	Blue	24	+ V reference	
Ch. 10	1	White	23	+ Analog input 10 Analog GND	420 mm
	2	Black	11		
	3	Red	29	+VB	
	4	Blue	24	+ V reference	
Ch. 11	1	White	19	+ Analog input 11 Analog GND	440 mm
	2	Black	27		
	3	Red	29	+VB	
	4	Blue	22	+ V reference	
Ch. 12/ Gear	1	White	20	+ Analog input 12 Analog GND	440 mm
	2	Black	27		
	3	Red		+ V reference	
	4	Blue	22		

Rif. / Ref.	Q.tà / Q.ty	Materiale / Material		N. articolo / Item N.		
Progettato da / Designed by L.I.		Contr. da / Ckd. by	Approvato da / Approved by	Nome file / File name	Data / Date	Scala / Scale
 Racing Data Power		Titolo / Title Cavo MXL Pro05 - Connettore Deutsch 37 pin				
		N. disegno / Drawing N. 04.554.20		Rev. / Rev.	Foglio / Sheet 2 of 3	


N.rev. / Rev. N.	Descrizione / Description	Data / date	Firma / Sign	Contr. da / Ckd. by
------------------	---------------------------	-------------	--------------	---------------------

Channels cabled with Binder 719 Continuation table of sheet 2

Channel	Binder pin	Cable colour	Deutsch pin	Connection	Length
Lap	1	white	37	Lap in	320 mm
	2	black	28	GND	
	3	red	14	+ VB	
	4	blue	37	Lap in	
Speed 1	1	white	36	Speed 1	320 mm
	2	black	28	GND	
	3	red	14	+ VB	
	4	n.c.			
Speed 2	1	white	30	Speed 2	320 mm
	2	black	28	GND	
	3	red	14	+ VB	
	4	n.c.			

Table of not cabled channels

Not cabled channels	Cable colour	Deutsch pin	Connection	Length
RPM	white	13	RPM Coil	520 mm
	black	18	GND	
	blue	12	Square wave >5 V	
Power	black	15	GND	520 mm
	red	1	9-15 V Power IN	

Rif. / Ref.	Q.tà / Q.ty	Materiale / Material	N. articolo / Item N.	
Progettato da / Designed by L.I.	Contr. da / Ckd. by	Approvato da / Approved by	Nome file / File name	Data / Date
		Titolo / Title Cavo MXL Pro05 - Connettore Deutsch 37 pin		
		N. disegno / Drawing N. 04.554.20	Rev. / Rev.	Foglio / Sheet 3 of 3

N.rev. / Rev. N.		Descrizione / Description		Data / date	Firma / Sign	Contr. da / Ckd. by	
<h1>MXL Pro05 cable - 22 pins Deutsch connector</h1>							
Rif. / Ref.		Q.tà / Q.ty		Materiale / Material		N. articolo / Item N.	
Progettato da / Designed by L.I.		Contr. da / Ckd. by		Approvato da / Approved by	Nome file / File name	Data / Date Scala / Scale	
		Titolo / Title Cavo MXL Pro05 - Connettore Deutsch 22 pin				N. disegno / Drawing N. 04.554.24	Rev. / Rev.
							Foglio / Sheet 1 of 2

N.rev. / Rev. N.	Descrizione / Description	Data / date	Firma / Sign	Contr. da / Ckd. by
------------------	---------------------------	-------------	--------------	---------------------

Channels ending with Binder 719


Channel	Binder Pin	Cable colour	Deutsch pin	Connection	Length
USB	1	white	7	USB D+	1100 mm
	2	black	9	GND	
	3	red	8	USB D-	
	4	n.c.			
Speed 3	1	white	5	Speed 3	300 mm
	2	black	11	GND	
	3	red	10	+ VB	
	4	n.c.			
Speed 4	1	white	6	Speed 4	300 mm
	2	black	11	GND	
	3	red	10	+ VB	
	4	n.c.			

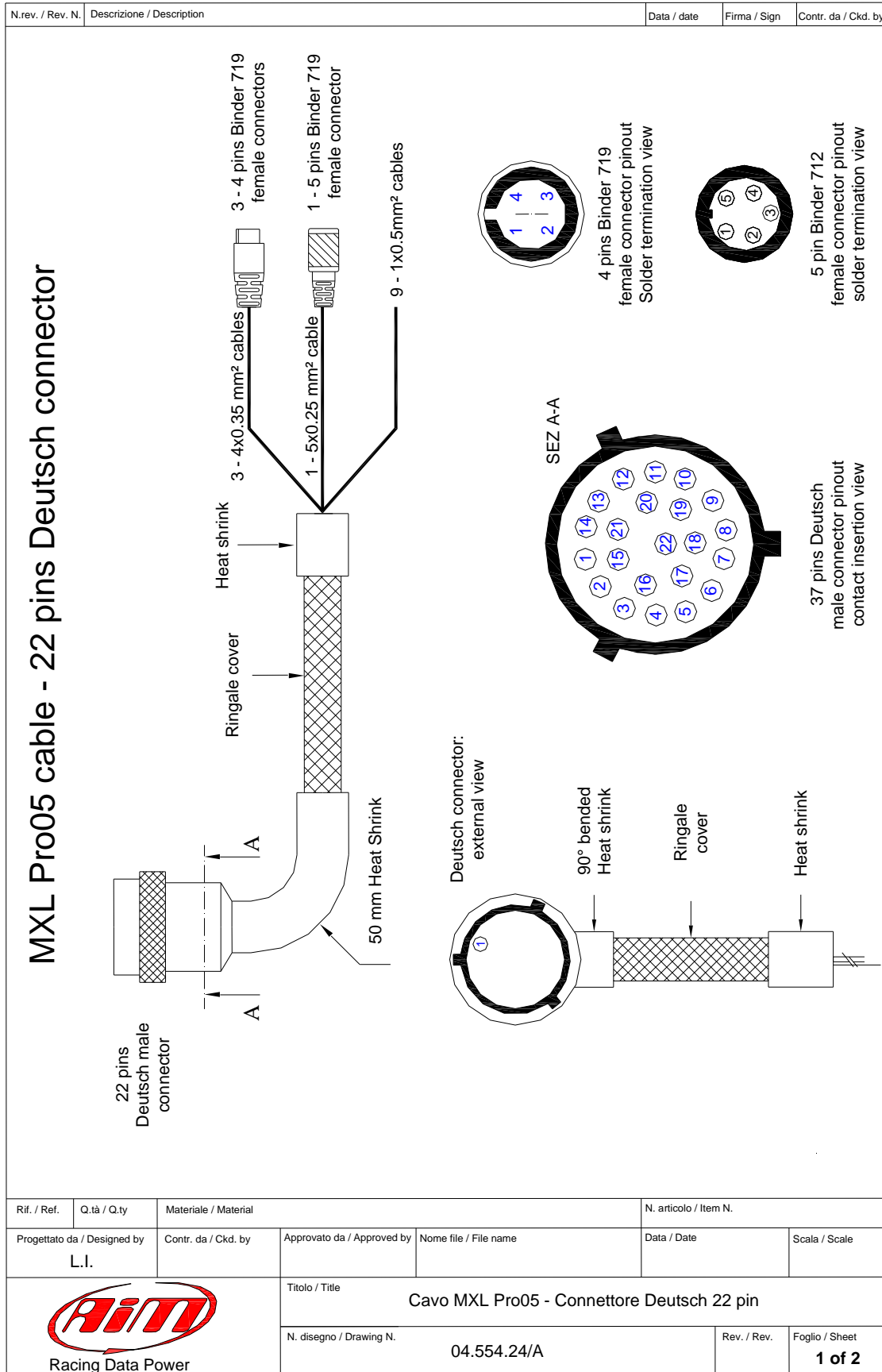
Channel ending with Binder 712

Channel	Binder pin	Cable colour	Deutsch pin	Connection	Length
Expansion	1	white	3	CAN 0+	350 mm
	2	black	2	GND	
	3	red	13	+ VB	
	4	blue	4	CAN 0-	
	5	blue		NC	

Not cabled channels table

Not cabled Channels	Cable colour	Deutsch pin	Connection	Length
Keyboard	white	14	MEM	550 mm
	black	12	GND	
	blue	15	VIEW	
CAN	white	20	CAN +	550 mm
	black	19	GND	
	blue	21	CAN -	
RS 232	white	17	RS 232 RX	550 mm
	black	19	GND	
	blue	18	RS 232 TX	

Rif. / Ref.	Q.tà / Q.ty	Materiale / Material	N. articolo / Item N.		
Progettato da / Designed by	Contr. da / Ckd. by	Approvato da / Approved by	Nome file / File name	Data / Date	Scala / Scale
L.I					
		Titolo / Title			
		Cavo MXL Pro05 - Connettore Deutsch 22 pin			
		N. disegno / Drawing N.	04.554.24	Rev. / Rev.	Foglio / Sheet
					2 of 2



N.rev. / Rev. N.	Descrizione / Description	Data / date	Firma / Sign	Contr. da / Ckd. by
------------------	---------------------------	-------------	--------------	---------------------

Channels ending with Binder 719


Channel	Binder Pin	Cable colour	Deutsch pin	Connection	Length
USB	1	white	7	USB D+	1100 mm
	2	black	9	GND	
	3	red	8	USB D-	
	4	n.c.			
Speed 3	1	white	5	Speed 3	300 mm
	2	black	11	GND	
	3	red	10	+ VB	
	4	n.c.			
Speed 4	1	white	6	Speed 4	300 mm
	2	black	11	GND	
	3	red	10	+ VB	
	4	n.c.			

Channel ending with Binder 712

Channel	Binder pin	Cable colour	Deutsch pin	Connection	Length
Expansion	1	white	3	CAN 0+	350 mm
	2	black	2	GND	
	3	red	13	+ VB	
	4	blue	4	CAN 0-	
	5	orange	22	+Vb ext.	

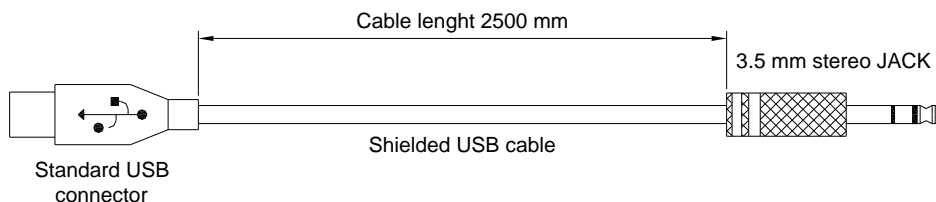
Not cabled channels table

Not cabled Channels	Cable colour	Deutsch pin	Connection	Length
Keyboard	white	14	MEM	550 mm
	black	12	GND	
	blue	15	VIEW	
CAN	white	20	CAN +	550 mm
	black	19	GND	
	blue	21	CAN -	
RS 232	white	17	RS 232 RX	550 mm
	black	19	GND	
	blue	18	RS 232 TX	

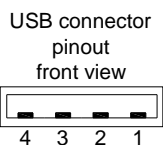
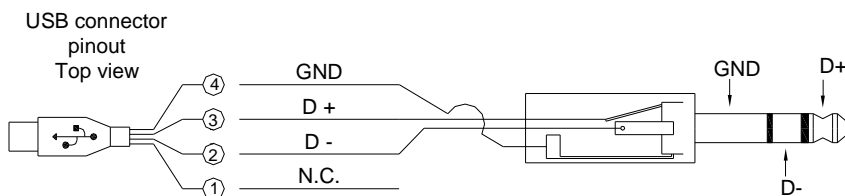
Rif. / Ref.	Q.tà / Q.ty	Materiale / Material	N. articolo / Item N.		
Progettato da / Designed by	Contr. da / Ckd. by	Approvato da / Approved by	Nome file / File name	Data / Date	Scala / Scale
L.I					
		Titolo / Title Cavo MXL Pro05 - Connettore Deutsch 22 pin			
		N. disegno / Drawing N. 04.554.24/A		Rev. / Rev.	Foglio / Sheet 2 of 2


N.rev. / Rev. N.	Descrizione / Description	Data / date	Firma / Sign	Contr. da / Ckd. by
------------------	---------------------------	-------------	--------------	---------------------

USB cable for data download - 3.5 mm stereo Jack



Pin connection



Rif. / Ref.	Q.tà / Q.ty	Materiale / Material	N. articolo / Item N.		
Progettato da / Designed by	Contr. da / Ckd. by	Approvato da / Approved by	Nome file / File name	Data / Date	Scala / Scale
		Titolo / Title			
		Cavo USB per scarico dati - Jack da 3.5 mm stereo			
N. disegno / Drawing N.			04.554.30	Rev. / Rev.	Foglio / Sheet
					1 of 1