



RS3

Track map addition

Question:

How can I add the map of the circuit I am racing on to the Race Studio 3 Tracks list, if it is not available or it is available but with a different layout?

Answer:

If the track with desired circuit should not be present in the Tracks section database of Race Studio 3, it is possible to proceed following one of the two procedures explained below:


- Selecting a circuit with the same start/finish line but with different layout (if available into the database): in this way, it is possible to cut lap times when crossing the start/finish line. GPS track will be recorded following the new route, since it is generated in an independent way from the layout of the transmitted track to the device.
- Creating a new track, defining its start/finish line coordinates: transmit this track to the device to have a reference for lap times detection.

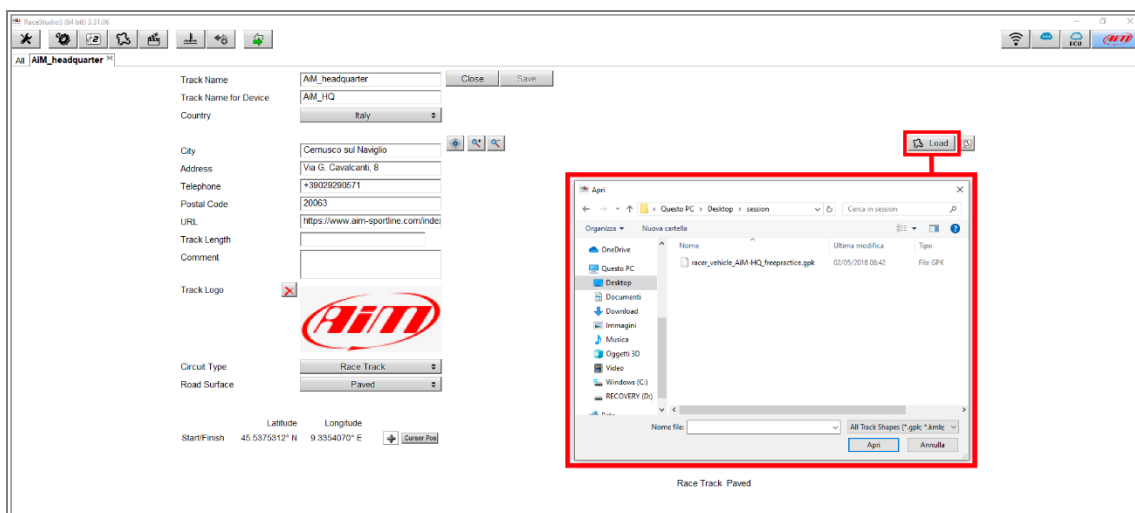
Once the operation is finished, after the track has been transmitted to the device, record a session to obtain the file with .gpk extension, which contains the circuit GPS shape.

N.B.: to obtain .gpk file, the presence of an AiM GPS receiver is mandatory.

RS3

Once the session has been recorded, after related data have been downloaded, the file which contains the GPS track shape will be available into the download destination folder of your PC (.gpk extension). From the Tracks section of Race Studio 3, it is possible to complete the track properties adding the GPS shape into the track details:

- If a circuit with the same start/finish line but different layout has been selected, to obtain the track with the desired layout, it is necessary to create a new track pressing "New" from the section main page. Then, press "  Load " (red box; following picture), selecting the .gpk file from the data relevant to the recorded session.
- If a new track has been created, only specifying start/finish line coordinates, it is enough to complete its details and add its GPS shape, importing it from data referred to the previously recorded session (following image).





RS3

Press "Save" (following picture) to confirm track modifying, that will be added to the circuits list of Race Studio 3.

