

AiM Infotech

Configuration  
with Race Studio 3  
of AiM PT100  
car/bike thermo resistor

Release 1.01

---



# 1

## Introduction

---

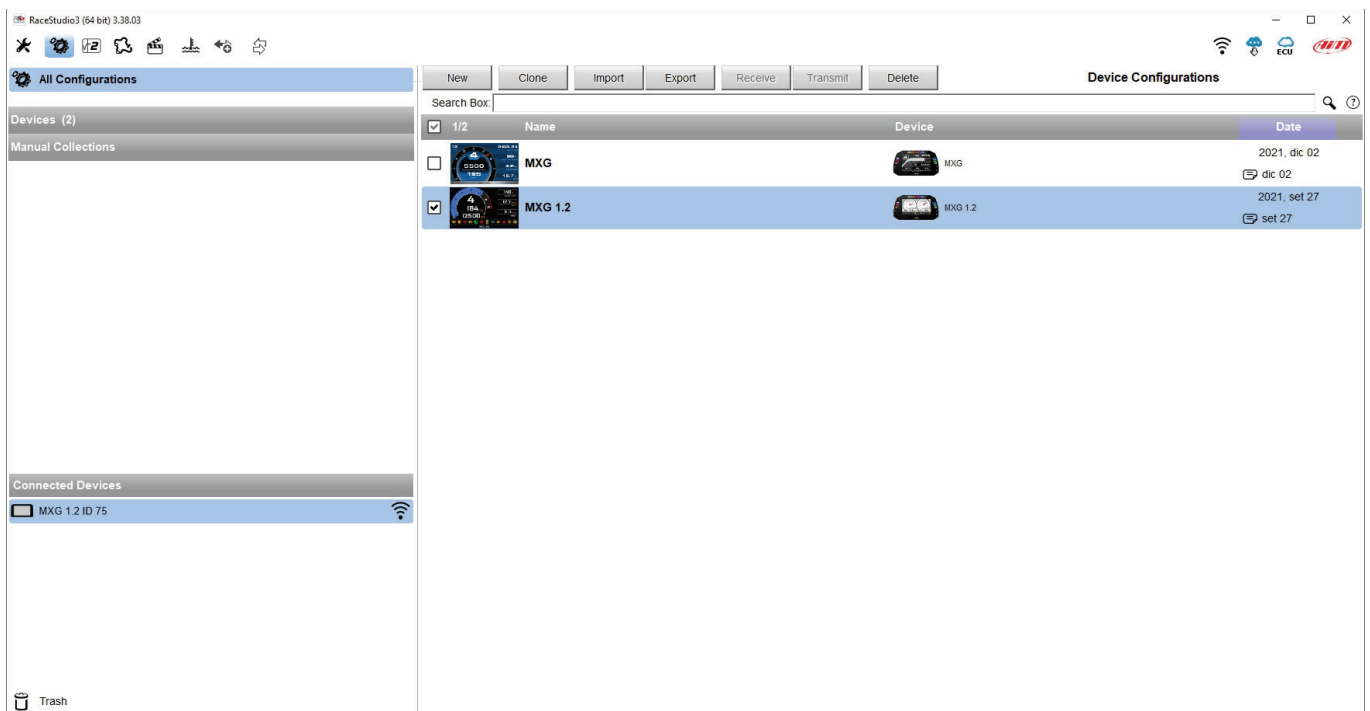
When the sensor is physically connected to one channel of AiM device you need to load it in the related configuration using **Race Studio 3** software..

# 2

## Race Studio 3 configuration

---

To load the sensor in the device configuration, with the device switched on and plugged in your PC, run the software and select the configuration where to load the sensor in (in the example MXG 1.2).



The software enters "Channels" layer.

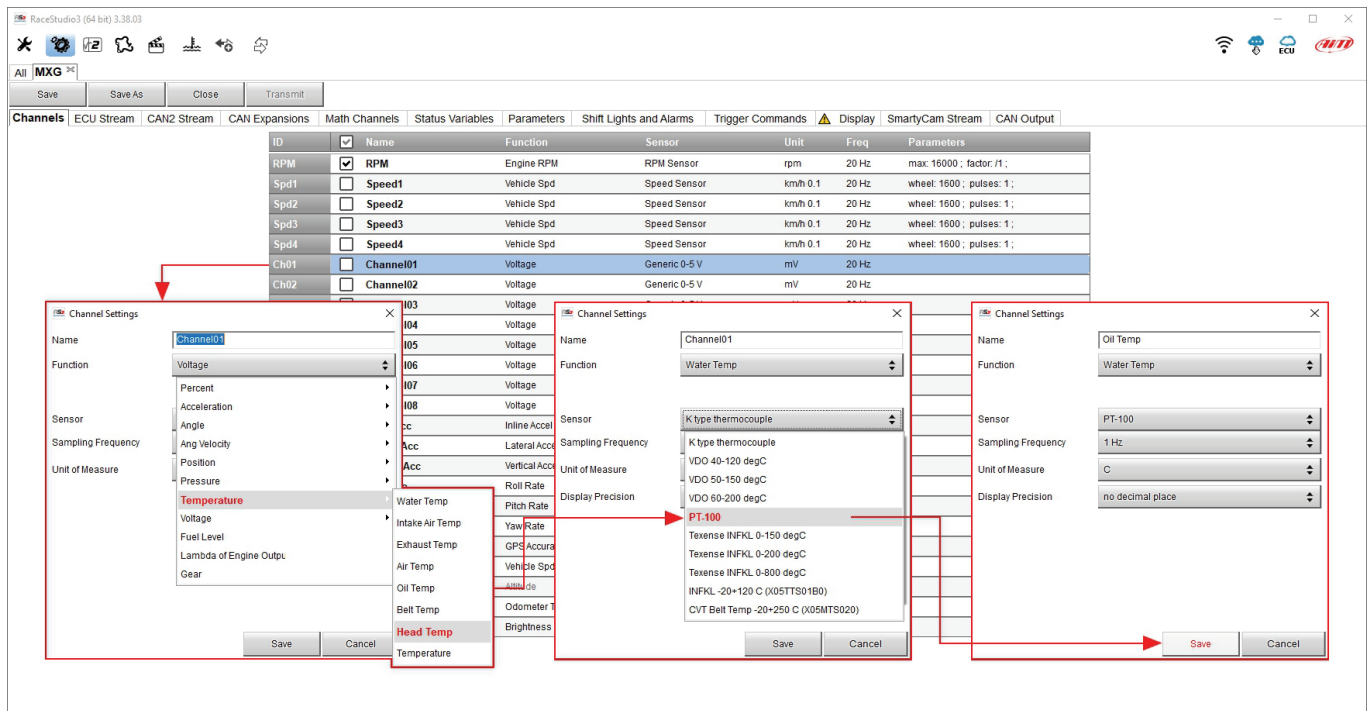
**Please note:** different AiM devices have a different channels management; this is why channels settings panel is different according to the device you are configuring

AiM devices that manages channels **as analog only** are:

- SW4
- EVO5
- EVO4S
- MXL2/MXG/MXS/MXS Strada
- MXm
- MXK10 Gen4
- MXK10Gen5

To configure the sensor:

- click the channel where to set the sensor on
- "Channel settings" panel is prompted: select "Temperature -> Temperature"
- the software sets "K-Type": **select** "PT-100"
- press "Save"



AiM devices that manages channels **both as analog and as digital** are:

- MX2E
- MXS 1.2/MXP/MXG 1.2
- MXS 1.2 Strada/MXP Strada/MXG 1.2 Strada
- MXL2/MXG/MXS Strada
- MXsl

To configure the sensor:

- click the channel where to set the sensor on
- "Channel Settings" panel is prompted: select "Analog" management
- Select "Temperature -> Temperature"
- the software sets "K type thermocouple": **select "PT-100"**
- press "save"

