

AiM User manual

Kawasaki
Ninja ZX-6R (636)
MY2013 - 2018

Release 1.01



1

Supported models and years

This user manual explains how to connect Kawasaki ZX6R to AiM devices. Supported models and years are:

- Kawasaki Ninja ZX-6R (636) MY2013 - 2018

***Warning:** for this model/year AiM recommends not to remove the stock dash. Doing so will disable some of the bike's functions or safety controls.

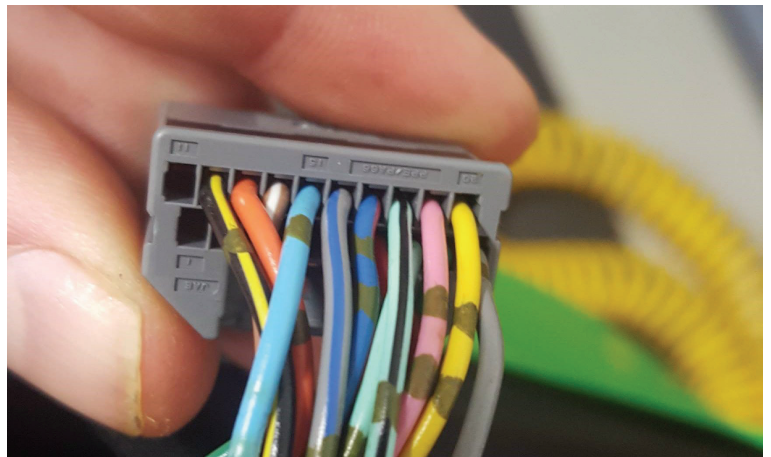
2

Wiring connection

Kawasaki ZX6R ECU features a bus communication protocol based on CAN that can be reached through the OEM dash connector, the ECU connector or other control units (i.e. ABS).

OEM dash connector on the bike loom is a 20 ways female connector with the following pins used for CAN and power connections (wires colours are specified too).

- **CAN H:** pin 16 (Gy/Bl)
- **CAN L:** pin 15 (LB)
- **Switched Power:** pin 14 (Br/W)
- **GND:** pin 12 (B/Y)



3

Race Studio configuration

Before connecting the bike ECU to AiM device set it up using Race Studio software. The parameters to set in the logger configuration are:

- ECU Manufacturer: **KAWASAKI**
- ECU model: **ZX6R 2013**

4

“Kawasaki” “ZX6R 2013” protocol

Channels received by AiM devices connected with “Kawasaki” “ZX6R 2013” protocol are:

NOME CANALE	FUNZIONE
RPM	RPM
Gear	Engaged gear
Speed Front	Front wheel speed sensor
Speed Rear	Rear wheel speed sensor
ECT	Engine coolant temperature
IAT	Intake air temperature
TPS	Throttle position sensor
Engine Load	Engine load
Odometer	Odometer
Clutch	Clutch switch
KTRC Mode	Traction control mode
KTRC Level	Traction control level
Power Mode	Engine map selection

Technical note: not all data channels outlined in the ECU template are validated for each manufacturer model or variant; some of the outlined channels are model and year specific and therefore may not be applicable.